



“Nwantinti,” a 2012 acrylic, charcoal, color pencil, collage and transfers on paper by Njideka Akunyili Crosby



COURTESY PHOTO

“Safari Chairs,” Susie Phipps Cochran. From “Art in the Family Tree,” Ann Norton.

NORTON MUSEUM OF ART

— 1451 S. Olive Ave., West Palm Beach. Has a variety of permanent collections. The Norton also offers its Art After Dark series every Thursday, 5 to 9 p.m. 832-5196; norton.org.

■ **Ongoing: Art After Dark** — 5-9 p.m. Thursdays. Tours, lectures, films, live music, hands-on art activities each week.

EXHIBITIONS:

■ **“Going Places: Transportation Design from the Jean S. and Frederic A. Sharf Collection”** — Through Jan. 3.

■ **“The Summer of '68: Photographing the Black Panthers”** — Through Jan. 17.

■ **“This Place: Israel Through Photography’s Lens”** — Through Jan. 17.

■ **“Streetwise Revisited: Photographs by Mary Ellen Mark”** — Dec. 10-March 20.

■ **“Njideka Akunyili Crosby: I Refuse to Be Invisible”** — Jan. 28-April 25. This is the Norton’s fifth annual RAW (Recognition of Art by Women) exhibition.

■ **“Majestic Mountain Retreat”** — Feb. 6-May 15. An installation featuring three Chinese hanging scrolls from the 18th century.

■ **“Still/Moving: Photographs and Video Art from the DeWoody Collection”** — Feb. 6-May 15.

■ **“O’Keeffe, Stettheimer, Torr, Zorach: Women Modernists in New York”** — Feb. 18-May 15.

VISITING MASTERPIECES ON RECIPROCAL LOAN FROM OTHER MUSEUMS:

■ **Vincent Van Gogh’s “The Poplars at Saint-Rémy,” (1889)** — Through April 17.

■ **Edgar Degas’ “Portrait of Mlle.**

Hortense Valpinçon,” (circa 1871) — Through May 15.

ANN NORTON SCULPTURE GARDENS

— 2051 Flagler Drive, West Palm Beach. 832-5328; ansg.org.

■ **Holiday House** — Nov. 28-Dec. 20. The Norton Home will be filled with treasures and holiday gifts. Stays open late from 6-8:30 p.m. Dec. 5. General and Festival of Trees admissions apply.

■ **Gala Evening In The Gardens, Festival Of Trees** — 7-10 p.m. Dec. 4. Food, drink, live entertainment. \$250 nonmembers, \$200 members.

■ **Children’s Gala, Festival of Trees** — 5-7 p.m. Dec. 13. \$40 adults and children. Special performances, music and surprises around every turn in the garden, child-friendly refreshments.

■ **Festival of Trees Community Days** — 5-8:30 p.m. Dec. 5-12 and 14-16. ANSG members and seniors \$15; nonmember adults \$20, children \$7.

■ **“Flowers”** — Jan. 6-March 6.

■ **Art in the Family Tree** — March 9-May 15.

ARMORY ART CENTER

— 1700 Parker Ave., West Palm Beach. 832-1776; armoryart.org.

EXHIBITIONS:

■ **Women in the Visual Arts - Artistic Visions 111** — Through Nov. 24.

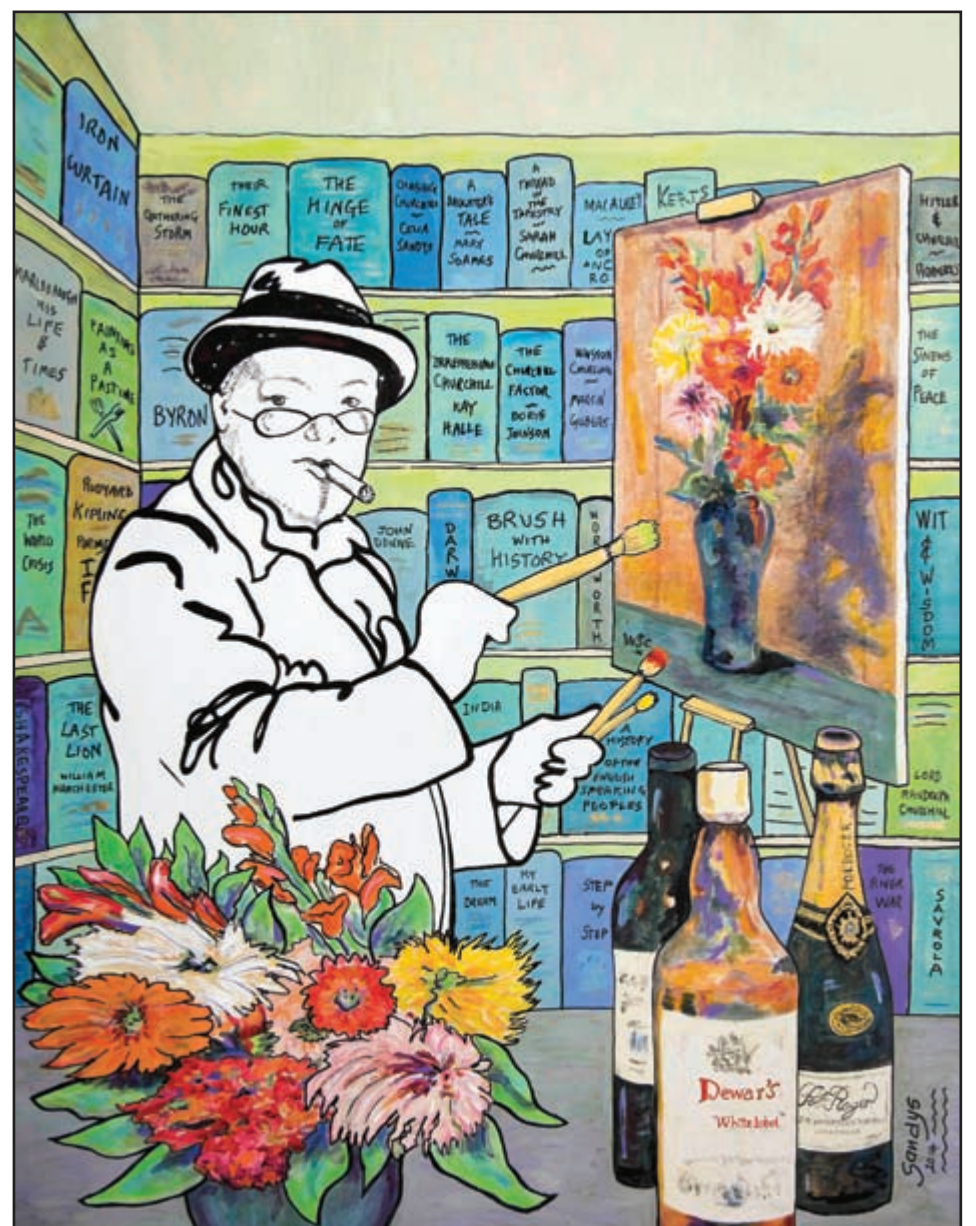
■ **Faceted: Aspects of Contemporary Jewelry** — Through Dec. 5.

■ **Charles Parness, I y i** — Through Nov. 28.

■ **Ceramic Mind Field: Contemporary Clay & Ceramics** — Dec. 12-Jan. 2. Opening Reception: 6-8 p.m. Dec. 11.

■ **Palm Beach Collects: Clay & Ceramics** — Dec. 12- Jan. 2. Opening reception: 6-8 p.m. Dec. 11.

■ **Jane Ehrlich – Recent Paintings** — Dec. 12-Jan. 9. Opening reception: 6-8 p.m. Dec. 11, Armory Annex Gallery, Lake Worth.



COURTESY PHOTO

“Brush with History,” by Edwina Sandys, part of “Flowers,” at Ann Norton Sculpture Gardens.

■ **Women of Vision, National Association of Women Artists, Inc. FL Chapter** — Jan. 16-Feb. 13. Opening reception 6-8 p.m. Jan. 15, Armory Art Center Annex Gallery.

■ **Rising Waters: an exhibition of recent works by Mags Harries** — Jan. 16-Feb. 12. Opening reception 6-8 p.m. Jan. 15. In collaboration with Mounts Botanical Gardens.

■ **River: an installation by Mags Harries and Lajos Heder** — Jan. 16-Feb. 12. Opening reception 6-8 p.m. Jan. 15. In collaboration with Mounts Botanical Gardens.

■ **2016 Palm Beach County Art Teachers Association Exhibition** — Feb. 18-28. Opening reception 6-8 p.m. Feb. 17.

■ **2016 Scholastic Art & Writing Awards Exhibition** — March 5-16. EG2 Palm Beach and Martin counties. Scholastics Awards Ceremony and Opening reception March 5. artandwriting.org or egquared.org